



CONNECT MID-HUDSON TRANSIT STUDY

STAKEHOLDER MEETING PRESENTATION



Project Background

- Following the 2000 Census, the Mid-Hudson Valley region was designated as a Transportation Management Area (TMA)
- The Mid-Hudson Valley Transportation Management Area (MHVTMA) includes the Metropolitan Planning Organizations (MPOs) in Orange, Dutchess, and Ulster Counties
- TMAs must develop a Congestion Management Process (CMP) that identifies actions and strategies to reduce congestion and increase mobility



Project Background

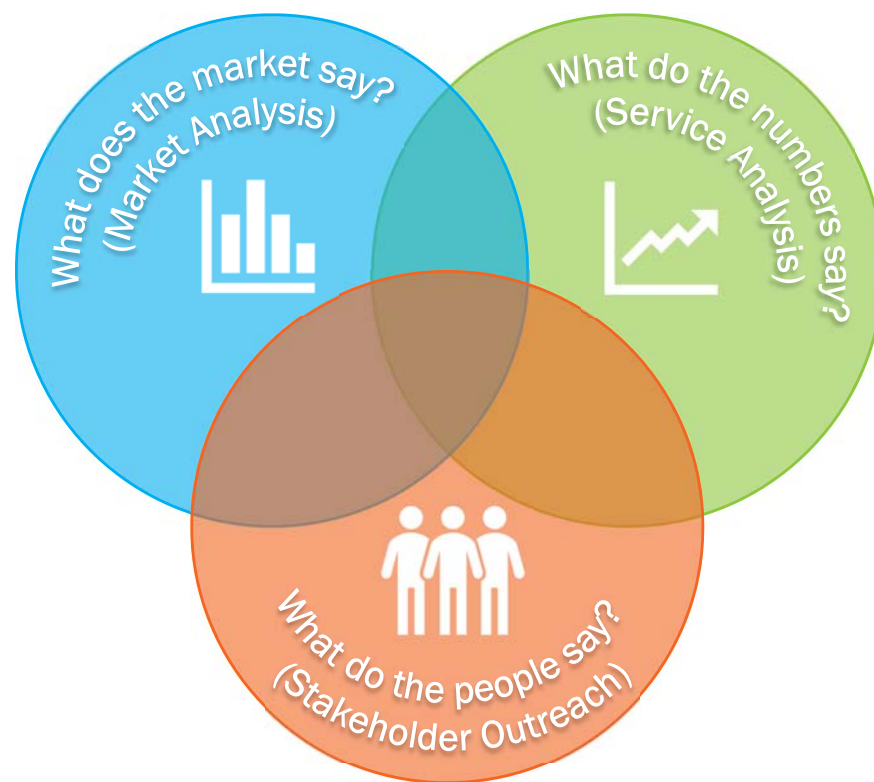
- Connect Mid-Hudson has several objectives:
 - Identify ways to better coordinate and connect existing transit systems in the study area and region
 - Develop strategies to improve transit operations in the region
 - Determine how the various transit systems can better connect major urban and employment centers to one another and to major transportation facilities

Service Providers:

- Transit Orange
- Dutchess County
- UCAT
- Coach USA
- Adirondack Trailways
- Trailways
- Leprechaun Lines
- NJ Transit
- Metro North
- Amtrak
- NY Waterway

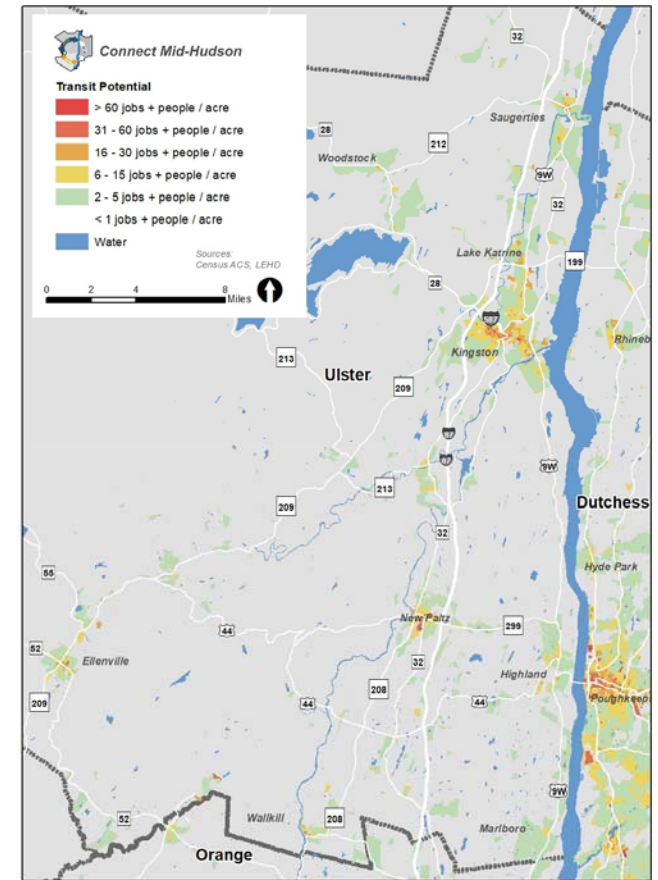


Project Approach



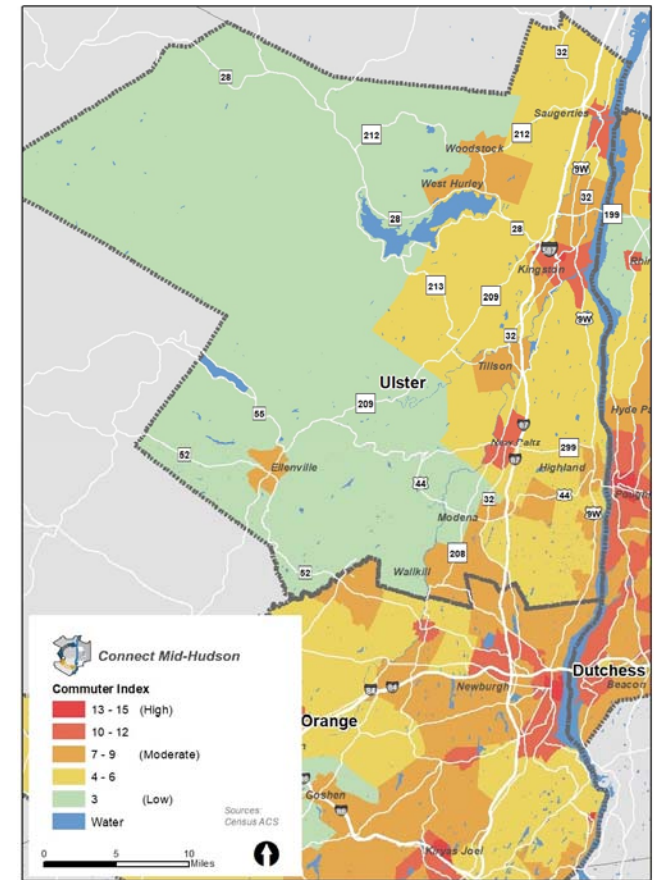
Market Analysis – Ulster County

- Transit Potential
 - Transit service is generally most efficient in areas with high concentrations of people and businesses.
 - For commuter services, density is less important because of larger capture areas, but still useful to identify where riders will likely be coming from and going to.



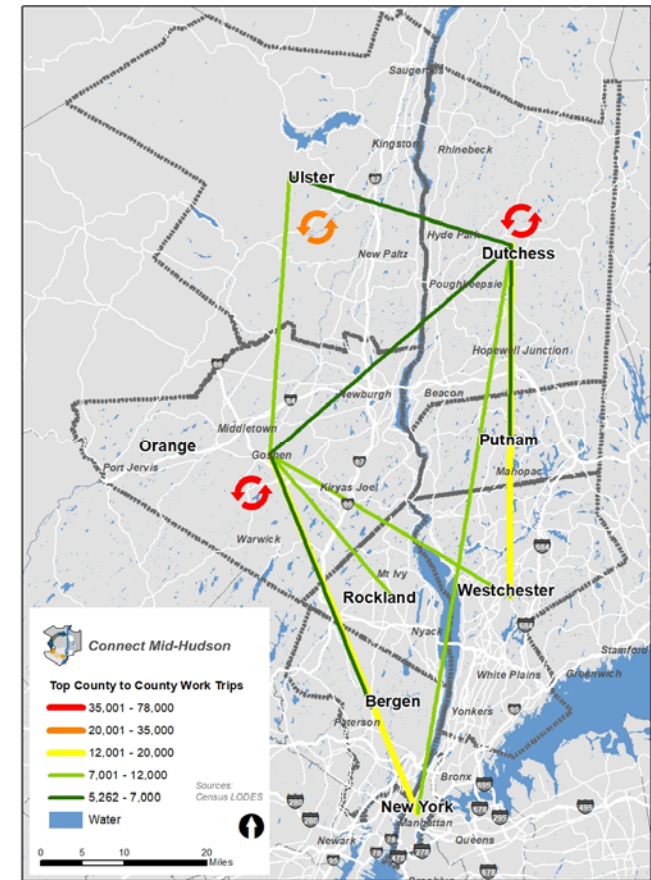
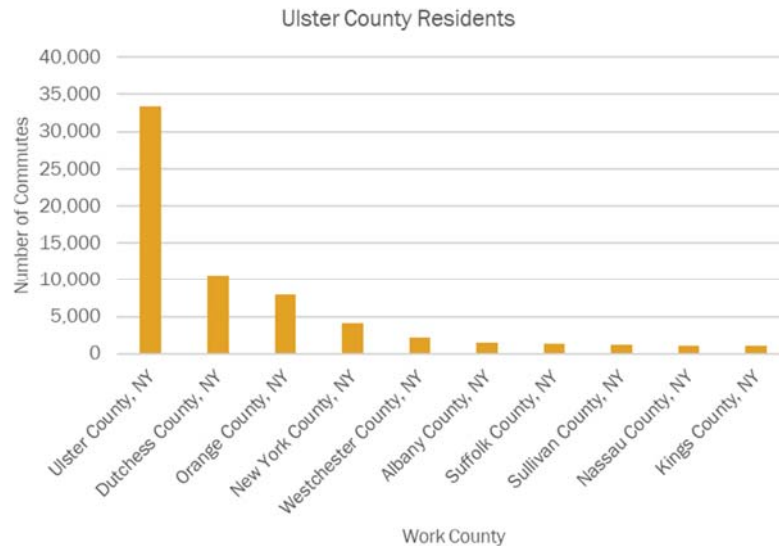
Market Analysis – Ulster County

- **Commuter Transit Need Index**
 - Certain population subgroups are more likely to use commuter services than the population in general.
- **Self-declared commuters**
 - Residents over 16 who identify as commuting to and from their workplace
- **Non-single-occupancy vehicle commuters**
 - Commuters who use public transit, vanpools, taxis, carpools, bicycles, or walk to work.
- **Zero and one-car households**
 - Families with multiple commuters but only a single vehicle, or any size household without a vehicle



Market Analysis – Ulster County

- County-to-County Home-to-Work Trips
 - To identify connections that may warrant transit service, it is important to understand the study area's most prevalent travel patterns, regardless of mode.



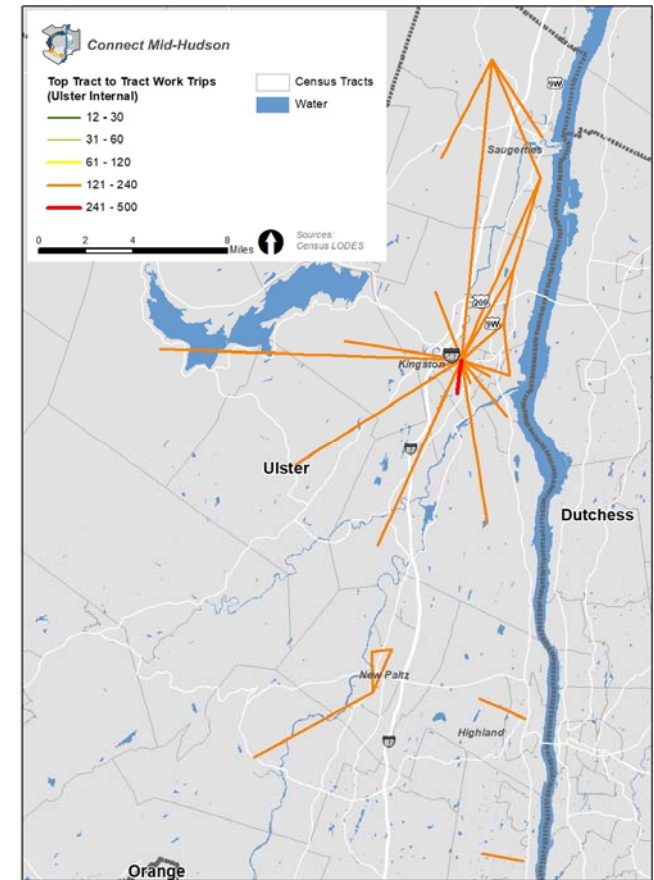
Market Analysis – Ulster County

- Tract-to-Tract Home-to-Work Trips for Top 3 County Pairs

- Ulster County Internal

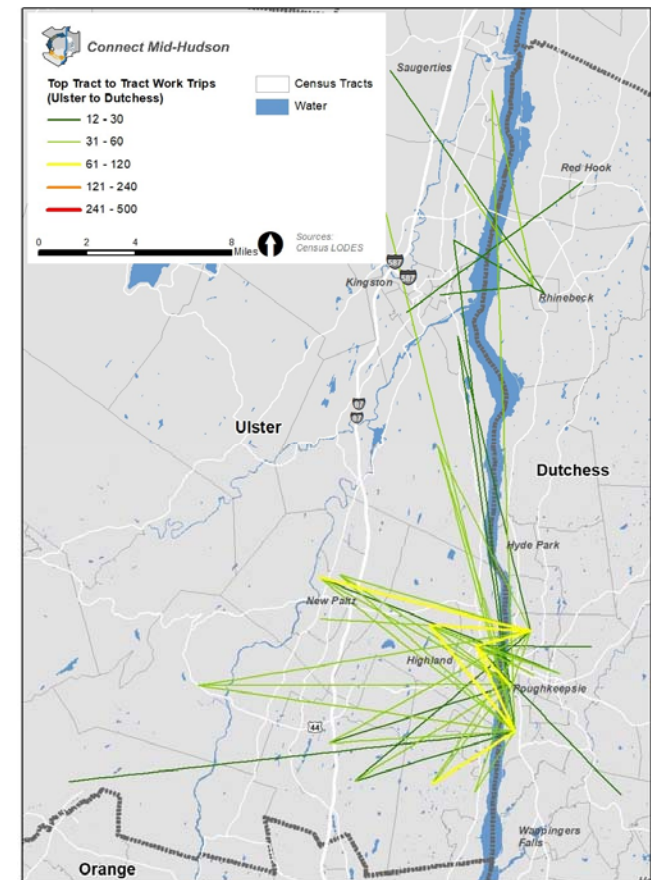
- Four major concentrations of trips

- Kingston
 - New Paltz
 - Saugerties



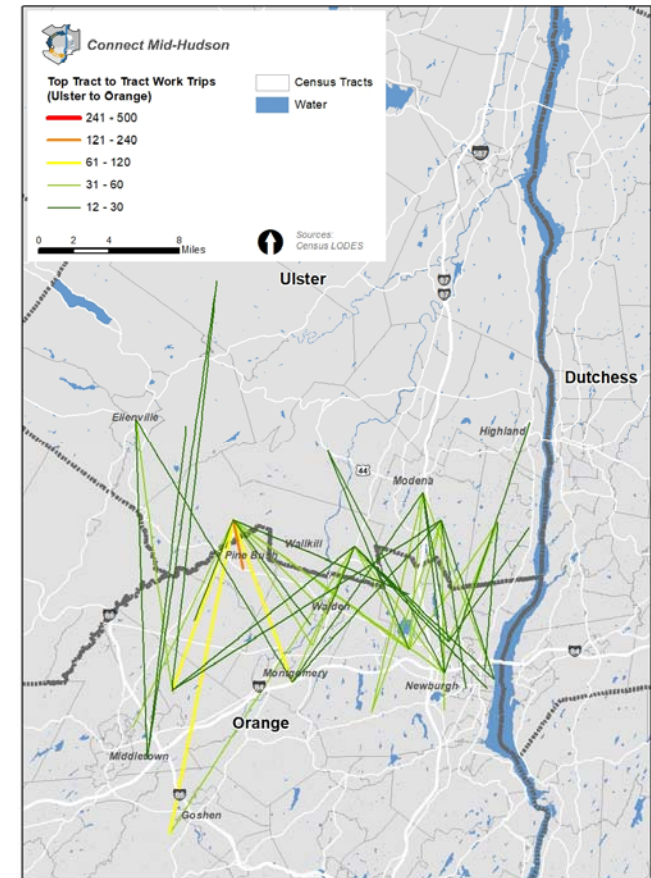
Market Analysis – Ulster County

- Tract-to-Tract Home-to-Work Trips for Top 3 County Pairs
 - Ulster County to Dutchess County
 - Majority of trips are to the Rhinebeck and Poughkeepsie areas from communities directly across the river.
 - Commuters from Highland and New Paltz primarily commute to the Marist College area of Poughkeepsie and the US-9 corridor just south of the downtown where IBM is located.



Market Analysis – Ulster County

- Tract-to-Tract Home-to-Work Trips for Top 3 County Pairs
 - Ulster County to Orange County
 - Majority of trips are less than 10 miles and are between the southern third of Ulster County and the northern half of Orange County.
 - Large number of trips to northwest Orange County, including Pine Bush, Goshen, and Middletown from Wallkill where the Watchtower complex is located.



Service Analysis – Ulster County

- UCAT
 - Routes W, X, Z, EU, KPL, and UPL are longer and connect towns and communities
 - Other routes are more local and circulator in nature
- Trailways
 - Most service out of Kingston to various locations, including Manhattan, Long Island, Albany, Rosendale, New Paltz, and Saugerties
- Connections to Orange County
 - X Route: New Paltz-Newburgh
 - Adirondack Trailways
 - New Paltz-Newburgh-Manhattan
- Connections to Dutchess County
 - UPL Route: Ulster-Poughkeepsie Link



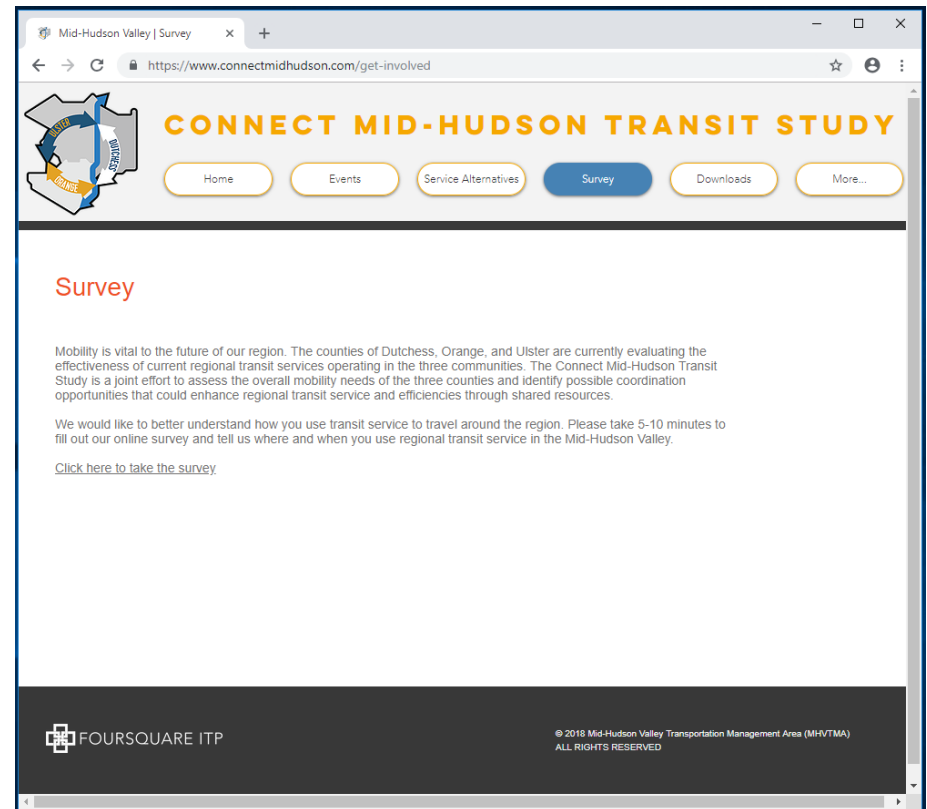
Passenger Facilities – Ulster County

- Golden Hill Transit Center (aka, One Danny Circle)
 - UCAT
- Kingston Bus Station
 - Trailways
- New Paltz Trailways Terminal
- Various Park and Rides
 - Rosendale
 - Highland
 - New Paltz
 - Kingston



Stakeholder Outreach – Ulster County

- Stakeholder meetings this month
- Public meetings likely next month (dates TBD)
- Project website now active
 - www.ConnectMidHudson.com
 - Includes transit survey
 - Designed for riders and non-riders
 - In English and Spanish
 - Focuses on how and why people use (or don't use) transit in the Mid-Hudson Region



Stakeholder Outreach – Ulster County

- What are the transit operators in Ulster County doing well?
- How could the transit operators in Ulster County serve commuters better?
- What are the top 1 or 2 most important goals that Ulster County transit operators should focus on in coming years?



Stakeholder Outreach – Ulster County

- Are there any current commuter routes in Ulster County that should be changed or eliminated?
- Are there travel flows or that not currently well-served by transit that should be?
- Are there other service issues that need attention (service frequency, hours of operation, fares, etc.)?



Stakeholder Outreach – Ulster County

- Do passengers have the tools they need to understand and use commuter services in Ulster County?
- Do the transit operators in Ulster County provide an inviting passenger environment?
- Are there other communities that “get transit right” and could serve as a model for Ulster County?





THANK YOU



FOURSQUARE ITP
INTEGRATED TRANSPORTATION PLANNING