



CONNECT MID-HUDSON TRANSIT STUDY

STAKEHOLDER MEETING PRESENTATION



Project Background

- Following the 2000 Census, the Mid-Hudson Valley region was designated as a Transportation Management Area (TMA)
- The Mid-Hudson Valley Transportation Management Area (MHVTMA) includes the Metropolitan Planning Organizations (MPOs) in Orange, Dutchess, and Ulster Counties
- TMAs must develop a Congestion Management Process (CMP) that identifies actions and strategies to reduce congestion and increase mobility



Project Background

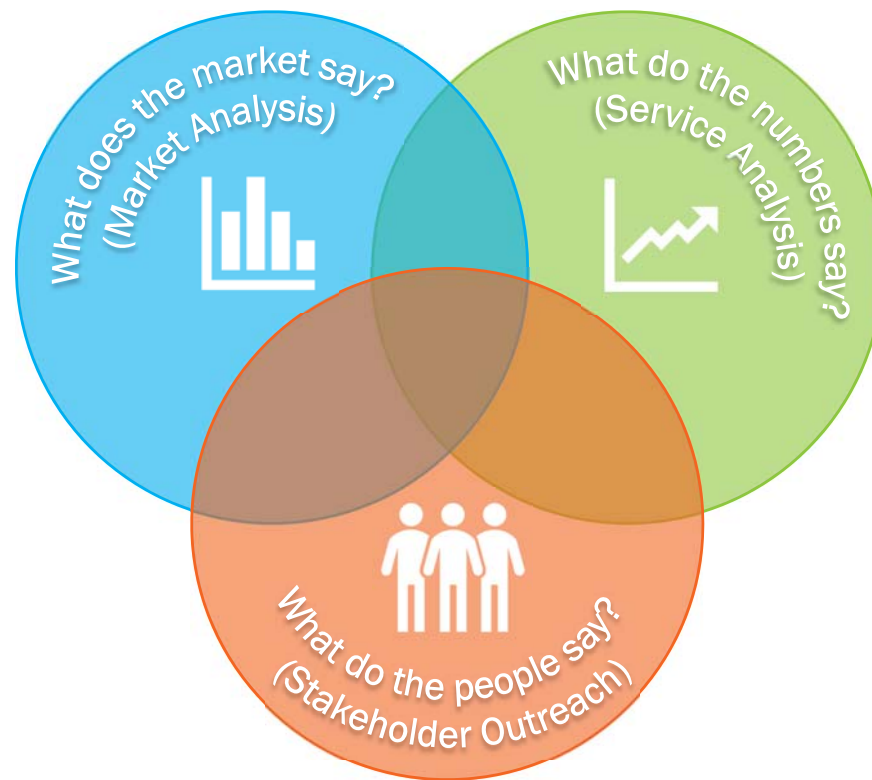
- Connect Mid-Hudson has several objectives:
 - Identify ways to better coordinate and connect existing transit systems in the study area and region
 - Develop strategies to improve transit operations in the region
 - Determine how the various transit systems can better connect major urban and employment centers to one another and to major transportation facilities

Service Providers:

- Transit Orange
- Dutchess County
- UCAT
- Coach USA
- Adirondack Trailways
- Trailways
- Leprechaun Lines
- NJ Transit
- Metro North
- Amtrak
- NY Waterway

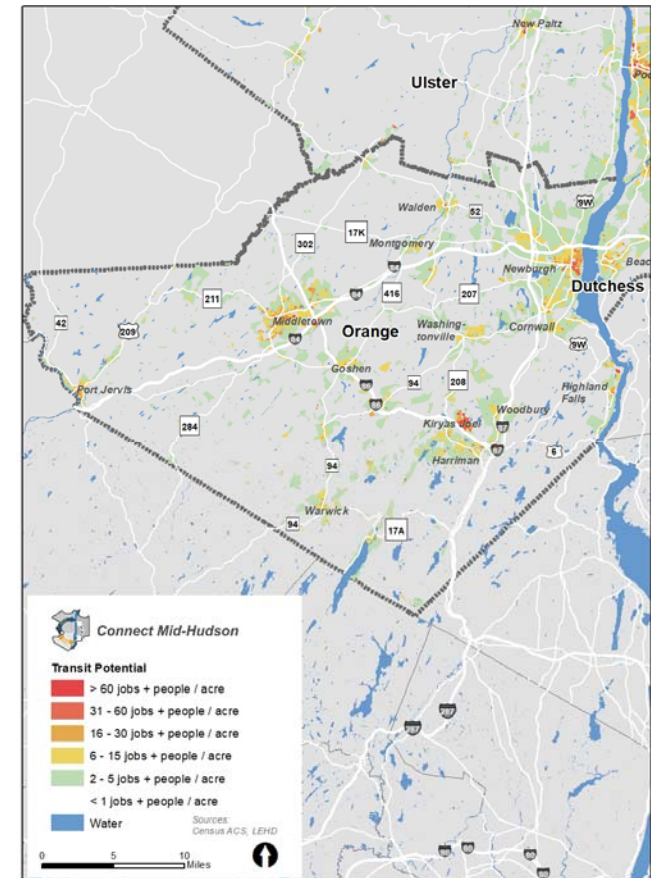


Project Approach



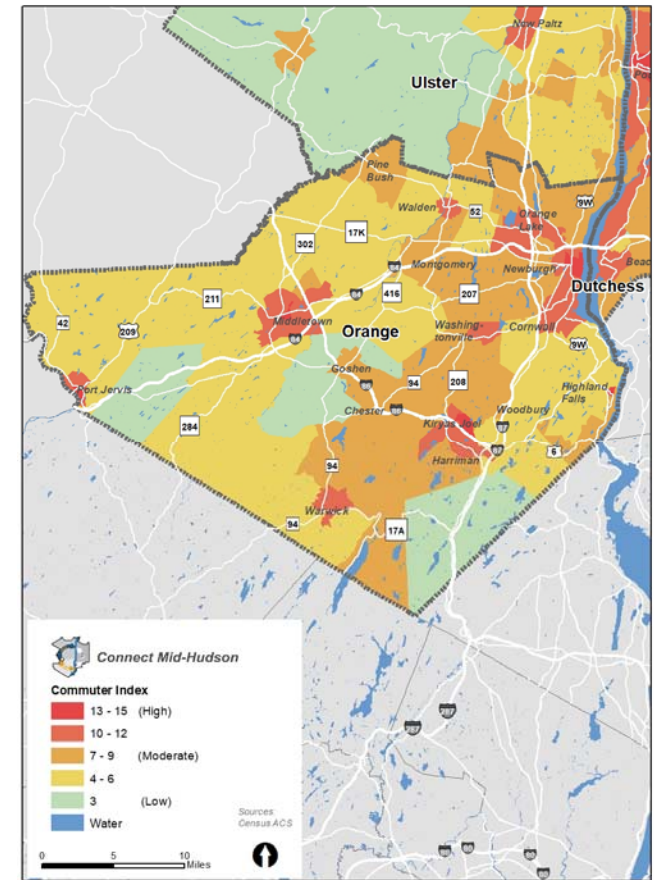
Market Analysis – Orange County

- Transit Potential
 - Transit service is generally most efficient in areas with high concentrations of people and businesses.
 - For commuter services, density is less important because of larger capture areas, but still useful to identify where riders will likely be coming from and going to.



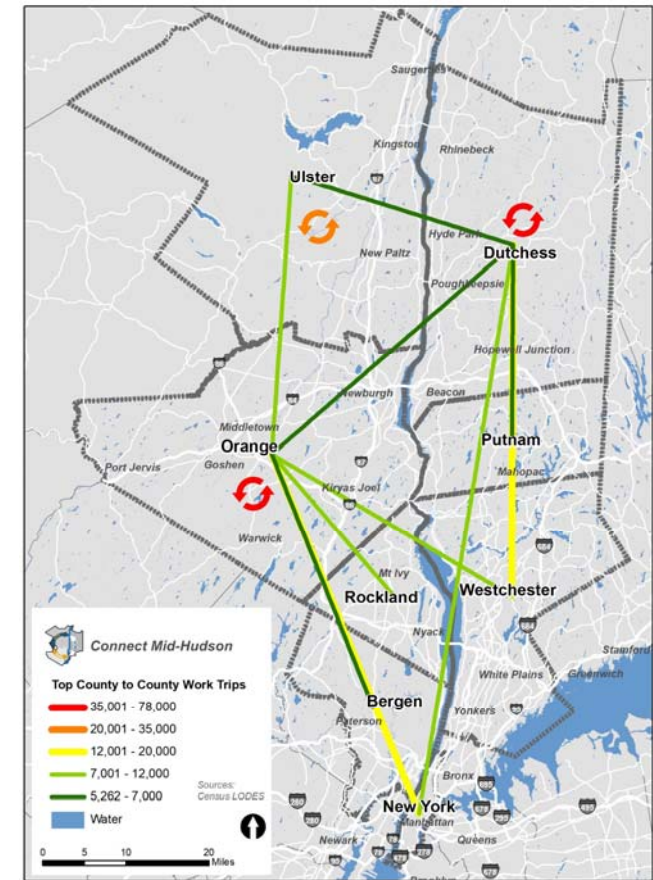
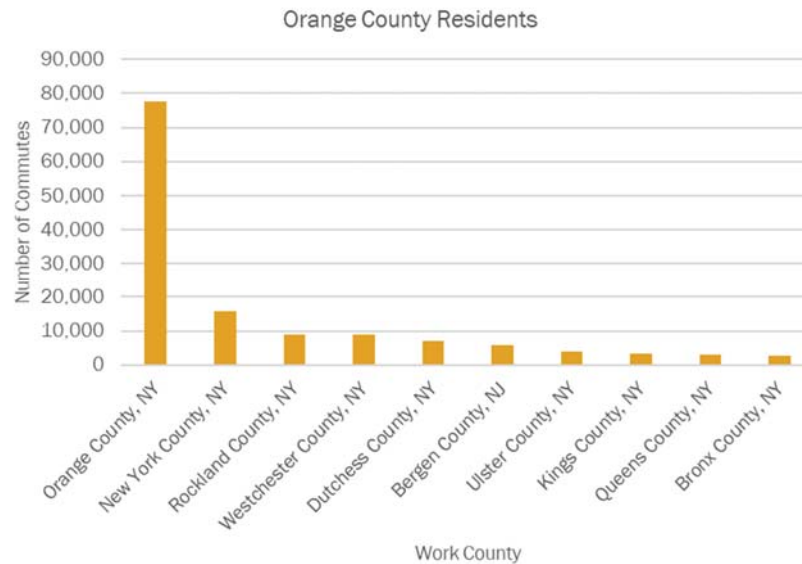
Market Analysis – Orange County

- **Commuter Transit Need Index**
 - Certain population subgroups are more likely to use commuter services than the population in general.
- **Self-declared commuters**
 - Residents over 16 who identify as commuting to and from their workplace
- **Non-single-occupancy vehicle commuters**
 - Commuters who use public transit, vanpools, taxis, carpools, bicycles, or walk to work.
- **Zero and one-car households**
 - Families with multiple commuters but only a single vehicle, or any size household without a vehicle



Market Analysis – Orange County

- County-to-County Home-to-Work Trips
 - To identify connections that may warrant transit service, it is important to understand the study area's most prevalent travel patterns, regardless of mode.



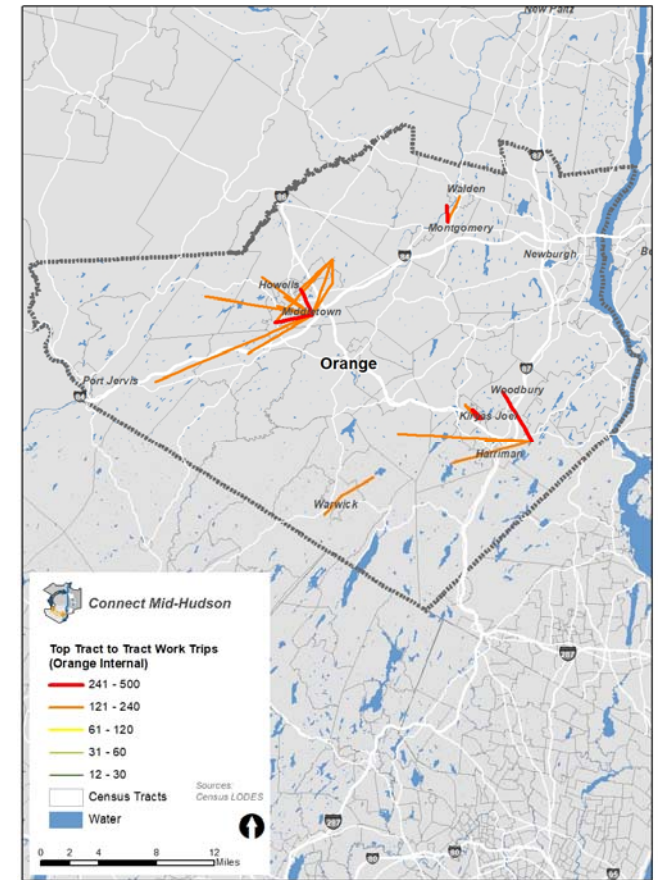
Market Analysis – Orange County

- Tract-to-Tract Home-to-Work Trips for Top 3 County Pairs

- Orange County Internal

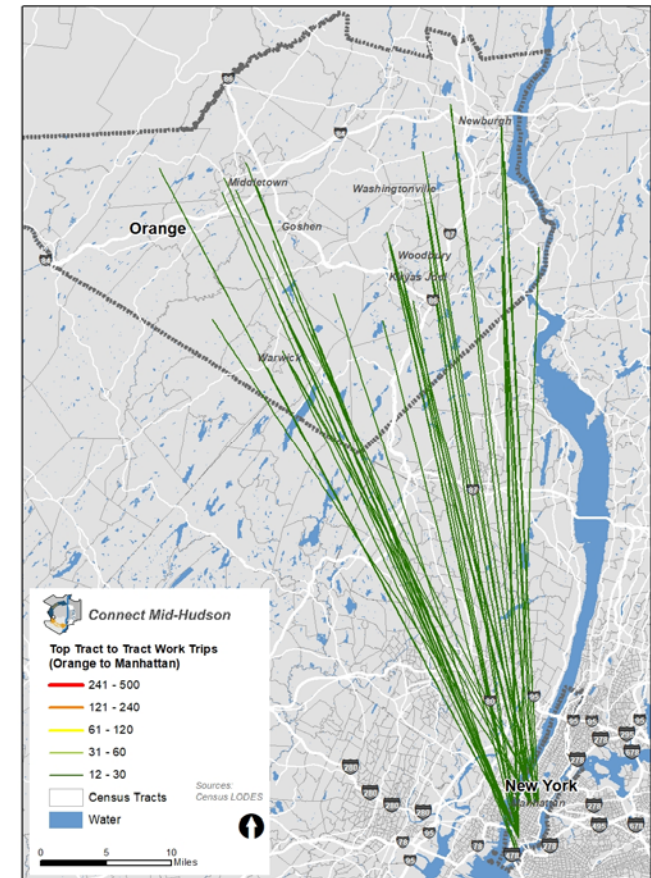
- Four major concentrations of trips

- Middletown
 - Warwick
 - Montgomery
 - Kiryas Joel/Harriman.



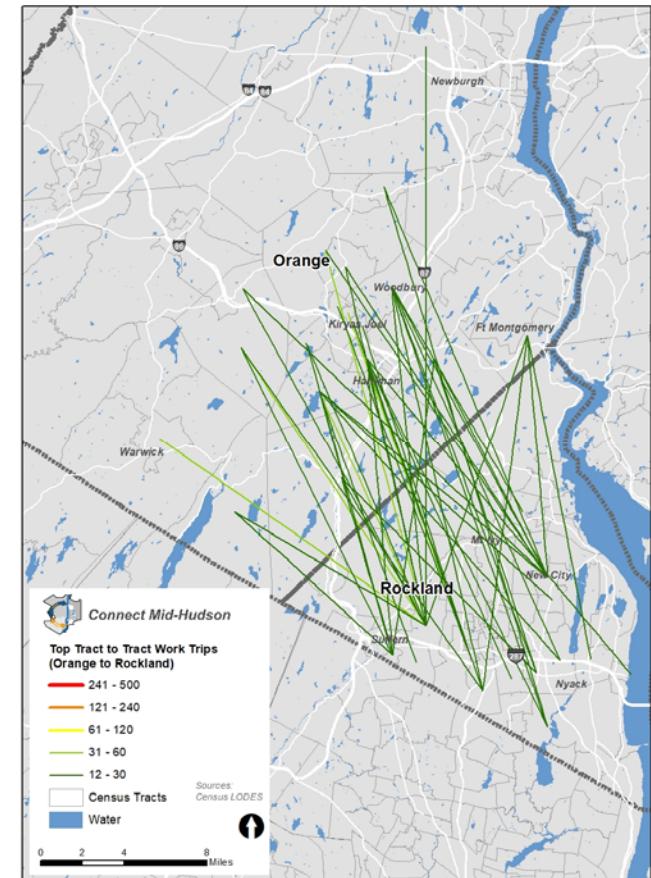
Market Analysis – Orange County

- Tract-to-Tract Home-to-Work Trips for Top 3 County Pairs
 - Orange County to New York County
 - Fairly equal number of people commute to midtown Manhattan as downtown Manhattan
 - Commuters to midtown Manhattan tend to live in eastern portions of the county closer to I-87 corridor
 - Commuters living in western portions of the county tend to commute to downtown Manhattan more than to midtown Manhattan



Market Analysis – Orange County

- Tract-to-Tract Home-to-Work Trips for Top 3 County Pairs
 - Orange County to Rockland County
 - Commuters to Rockland County are generally clustered in southeast portions of the county, particularly Kiryas Joel, Woodbury, Harriman, and the I-86 corridor.
 - Destinations in Rockland County are evenly distributed across it, however New City and Suffern have the highest concentrations.



Service Analysis – Orange County

■ Coach USA/Shortline

- Commuter services into Manhattan and the Port Authority bus terminal from various locations
 - Newburgh, Circleville, Middletown, New Hampton, Goshen, Chester, Monroe, Central Valley, Harriman, Tuxedo
- Manhattan to Woodbury Commons Premium Outlets
- Manhattan to Stewart Int'l Airport
- Manhattan to Port Jervis
- Orange County-Westchester County Link (OWL)
- Main Line (on behalf of Transit Orange)



Service Analysis – Orange County

- Metro North
 - Port Jervis Line
- Leprechaun Lines
 - Newburgh-Beacon-Stewart Shuttle
- Monroe Bus Corporation
 - Kiryas Joel to Manhattan and Brooklyn
- Monsey Trails
 - Kiryas Joel to Monsey in Rockland County
- Warwick Inter-Municipal Bus
 - Local shuttle
 - Service to Middletown, Goshen, and Monroe
- NJ Transit
 - Warwick to New York City via New Jersey
- Connections to Dutchess County
 - Coach USA/Shortline
 - Poughkeepsie-Newburgh-Manhattan
 - Newburgh-Beacon-Stewart Shuttle
 - NY Waterway
 - Newburgh-Beacon ferry
- Connections to Ulster County
 - UCAT
 - X Route: New Paltz-Newburgh
 - Adirondack Trailways
 - New Paltz-Newburgh-Manhattan
- Other local routes, including Transit Orange



Service Analysis – Orange County

■ Transit Orange:

— Local:

- Main Line
 - Along SR-17
- Middletown: Mid-City, Hudson Transit (Coach USA)
- Newburgh: Leprechaun
- Village of Kiryas Joel:
- Countywide: Coach USA

— Commuter:

- Coach USA
 - To New York City, West Point, and Westchester County
- Newburgh-Beacon-Stewart Shuttle: Leprechaun
- Monroe Bus
 - Kiryas Joel to Manhattan and Brooklyn
- Monsey Transit
 - Kiryas Joel to Monsey (Rockland Co.)
- NJ Transit
 - Warwick to New York City

■ Warwick Inter-Municipal Bus

- Local shuttle
- Service to Middletown, Goshen, and Monroe

■ Connections to Dutchess County

- Coach USA/Shortline
 - Poughkeepsie-Newburgh-Manhattan
- Newburgh-Beacon-Stewart Shuttle
- NY Waterway
 - Newburgh-Beacon ferry

■ Connections to Ulster County

- UCAT
 - X Route: New Paltz-Newburgh
- Adirondack Trailways
 - New Paltz-Newburgh-Manhattan



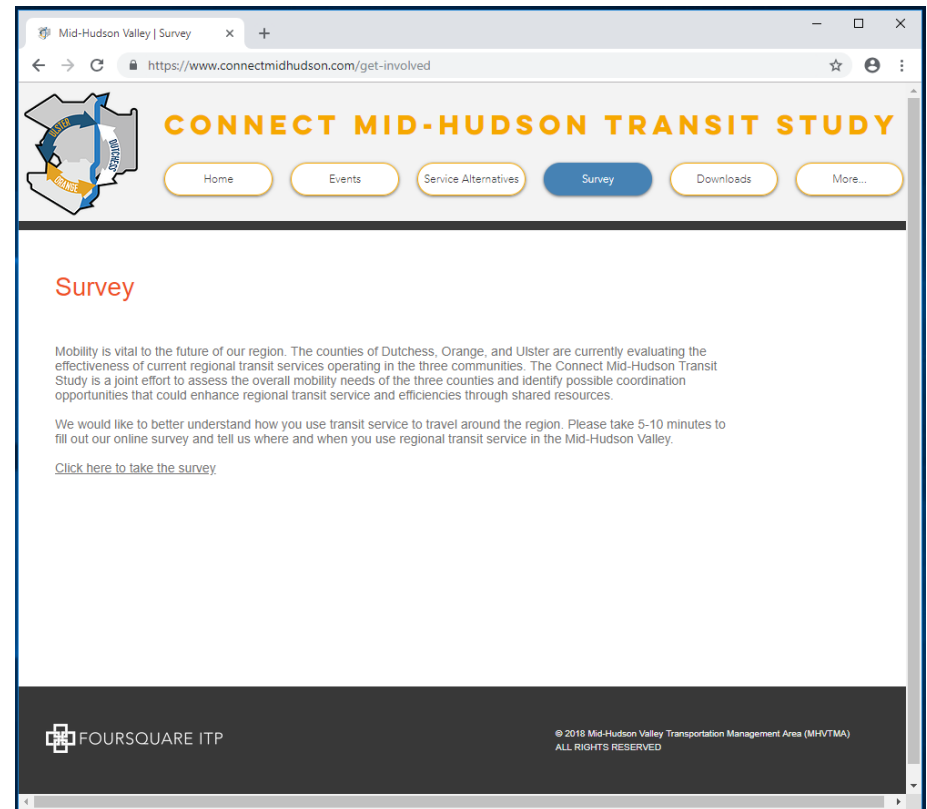
Passenger Facilities – Orange County

- **Middletown Bus Terminal**
 - Coach USA/Shortline
- **Newburgh Bus Terminal**
 - Coach USA/Shortline
 - Leprechaun Lines
 - UCAT
- **Eight Metro-North stations on the Port Jervis line**
- **Various Park and Rides**
 - Ones mentioned specifically to us by providers: Monroe, Chester, Central Valley, Goshen
- **Stewart Int'l Airport**
 - Coach USA/Shortline
 - Leprechaun Lines



Stakeholder Outreach – Orange County

- Stakeholder meetings this month
- Public meetings likely next month (dates TBD)
- Project website now active
 - www.ConnectMidHudson.com
 - Includes transit survey
 - Designed for riders and non-riders
 - In English and Spanish
 - Focuses on how and why people use (or don't use) transit in the Mid-Hudson Region



Stakeholder Outreach – Orange County

- What are the transit operators in Orange County doing well?
- How could the transit operators in Orange County serve commuters better?
- What are the top 1 or 2 most important goals that Orange County transit operators should focus on in coming years?



Stakeholder Outreach – Orange County

- Are there any current commuter routes in Orange County that should be changed or eliminated?
- Are there travel flows that are not currently well-served by transit that should be?
- Are there other service issues that need attention (service frequency, hours of operation, fares, etc.)?



Stakeholder Outreach – Orange County

- Do passengers have the tools they need to understand and use commuter services in Orange County?
- Do the transit operators in Orange County provide an inviting passenger environment?
- Are there other communities that “get transit right” and could serve as a model for Orange County?





THANK YOU



FOURSQUARE ITP
INTEGRATED TRANSPORTATION PLANNING